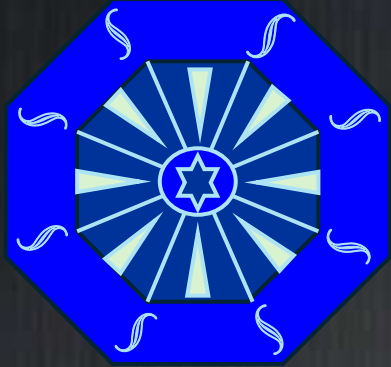


TILE PATTERN
Original Design
by
Red Andy Art



BLUE STAR TILE DESIGN



Modular Tile System — Blue Variant

This design is based on a precise geometric structure originally developed as a digital artwork inspired by Mediterranean and Islamic architectural traditions. The motif is re-engineered as a fully modular tile system suitable for both wall cladding and floor applications.

Its octagonal–diamond composition maintains clarity across formats (20×20, 30×30, 60×60) and can be adapted into multiple colorways without losing its visual balance.

The system works in kitchens, bathrooms, entryways and high-traffic interiors, and is also suitable for exterior use — including secondary façade skins, garden walls and outdoor architectural surfaces.

The Blue Variant reflects the calm, contemporary character of the original artwork while offering full flexibility for ceramic production.

BLUE STAR TILE DESIGN – mock ups

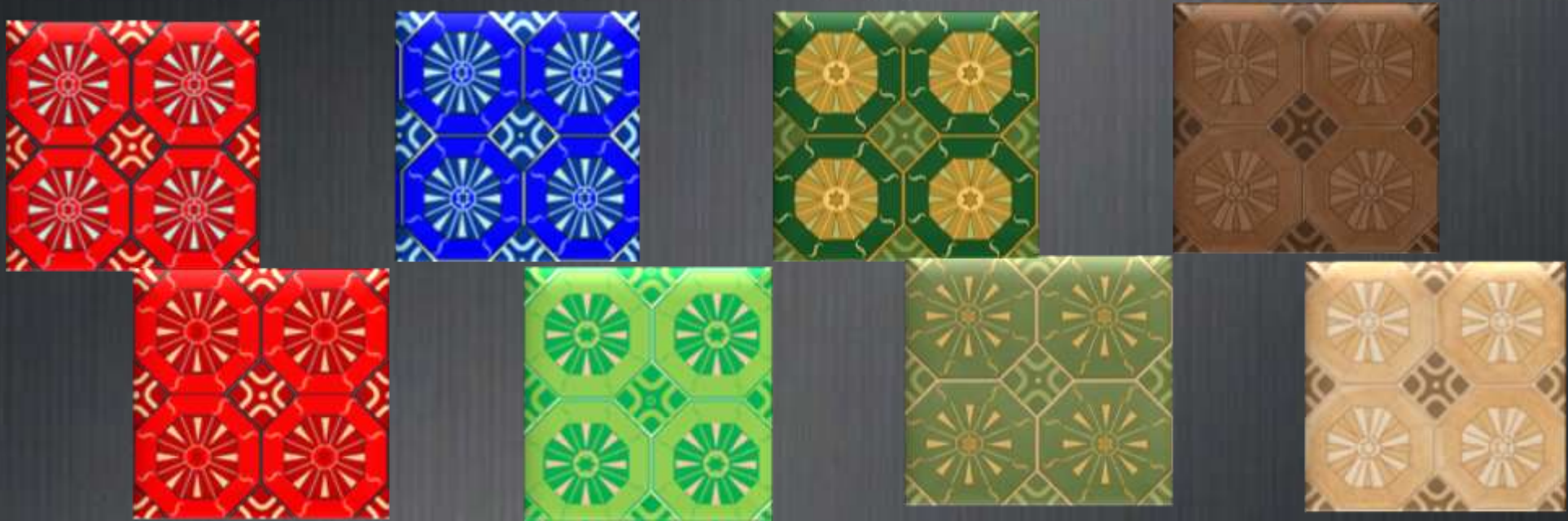


BLUE STAR TILE DESIGN – Mock-ups of Other Variants

These mock-ups illustrate how the Star Modular System evolves through color and rosette variations, offering a spectrum of interior atmospheres—from soft neutrals to bold accents. Each client can select the expression that best suits their environment.



BLUE STAR TILE DESIGN – color variations

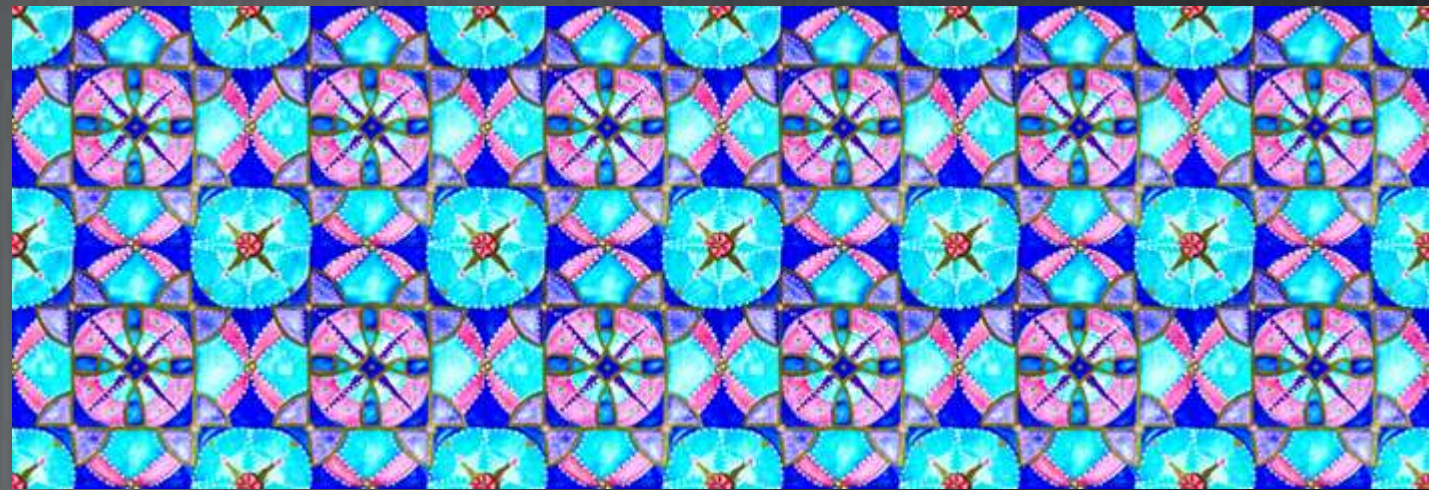


This modular motif can be produced in multiple color variations, each creating a distinct atmosphere within the interior, allowing every client to find the palette that fits their space.

FLOWER MANDALA TILE DESIGN



Flower Mandala translates a hand-painted geometric–floral motif into a refined surface design suitable for both interiors and exteriors, adding a positive and timeless atmosphere to architectural spaces.



FLOWER MANDALA TILE DESIGN - Mock-ups interior



Flower Mandala works naturally in interior applications, especially as a kitchen backsplash where its geometric–floral structure adds a soft decorative accent. The hand-painted origin brings warmth and authenticity, allowing the motif to complement both contemporary and traditional kitchen spaces.

In bathroom settings, the design introduces a calm and positive atmosphere. Its balanced geometry makes it ideal for wall cladding around vanities, mirrors or shower areas, adding character while keeping the space visually clean and harmonious.



FLOWER MANDALA TILE DESIGN - Mock-ups exterior



Flower Mandala demonstrates how a geometric–floral motif can extend beyond interiors into architectural surfaces. Its hand-painted origin gives the design warmth and authenticity, while the geometric structure ensures durability and visual balance. In exterior applications, the motif adds a refined decorative layer that enhances façades, courtyards or garden walls with a positive, timeless atmosphere.



MAGHREB STAR TILE DESIGN



This design is based on an original hand-painted artwork inspired by historic Islamic geometry. The motif is expressive, richly detailed and intentionally preserved in its original color palette, which cannot be altered without losing its character. Its atmosphere shifts through the choice of rosettes placed between the octagons — from clean and contemporary to warm, brass-accented or fully ornamental.

Because of its strong visual identity, this tile is ideal for curated, small-batch collections produced on demand. It works exceptionally well in luxury interiors as well as in high-end residential projects, where a distinctive and culturally rooted statement piece is desired.

MAGHREB STAR TILE DESIGN – Bathroom mock-ups



This expressive hand-painted motif keeps its original color palette, but its atmosphere shifts through different rosette variations. Each rosette creates a distinct interior character — from a clean luxury look, to a more extravagant expression, to a refined high-middle-class aesthetic. These variations make the tile suitable for curated, small-batch applications across bathrooms of different styles while preserving the strong identity of the original artwork.



MAGHREB STAR TILE DESIGN – Hammam mock ups



In the hammam setting, the muted red rosette softens the geometry and creates a calm, intimate atmosphere.

In low, diffused light, the motif shifts into a warm, grounding presence that supports relaxation and quiet focus, making it ideal for spa and wellness environments where a serene visual tone is essential.



MAGHREB STAR TILE DESIGN - Mock-ups



In the living room application, the tile with red rosettes creates a strong, expressive focal point. The combination of floor installation and fireplace cladding gives the space a warm, grounded atmosphere with a distinctive cultural identity.

In the men's walk-in wardrobe, the yellow and gold rosettes shift the motif into a more luxurious expression. The geometry becomes brighter and more refined, adding a sense of precision and exclusivity that complements high-end interior detailing.



MAGHREB STAR TILE DESIGN - Rosette Variations



ART ROOTED IN HERITAGE



Contact:

Andrea Ohlsson

andrea.ohlsson@redandyart.com

Whats app: +420 601 541 000

www.redandyart.com

